

LOW VOLTAGE AC DRIVES

# Drive Composer 3

User experience interface for superior drive management



Drive Composer 3 is the latest version of our easy-to-use, reliable, and secure tool for faster commissioning, monitoring, and troubleshooting ABB all-compatible drives. The tool can also be used for optimizing drive performance.

## 01



### What's new in Drive Composer 3?

Drive Composer 3 provides a refreshed user experience while still offering the most popular power-user functionalities from previous versions of the tool.

#### User experience enhancements include:

- Parameter browser with offline parametrization support
- Drive info view
- Backup and restore functionality
- Event and fault log
- Monitoring and trending views
- Drive firmware update
- Adaptive programming (Drive AP)

### More efficient than ever

#### 1.1 Fast, reliable connectivity options

Users can connect to drives either locally or remotely using Ethernet or USB. Connecting via an Ethernet network allows you to access over 100 drives simultaneously. Drive connections remain reliable even over a slower internet connection or when using a VPN.

#### 1.2 Quick, effortless commissioning

When commissioning more complex applications, the parameter list view gives you full access to configure a drive. With flexible filtering and the 'favorite parameters' view, you can easily access the parameters you use most often.

#### 1.3 Advanced features for power users

Power users can dive deep into drive behavior, with access to all parameters. Power users can also pre-commission systems using offline drive configuration and monitor signals from multiple drives in the same way as they would with DriveWindow and earlier versions of Drive Composer.

# 02



## Easy to use

### 2.1 Backward compatible and future-proof

Access all drives from the same application whether you are working with a large drive system in a paper mill or a single-drive setup for a building air conditioning system. Drive Composer 3 is compatible with any all-compatible ABB drive.

### 2.2 Easy to get started

Common user-interface components and familiar web components make it quick and easy to get started.

### 2.3 Faster commissioning and reduced risk

Virtual commissioning allows you to preconfigure drive parameters in advance without a real-time connection to the drive. Virtual commissioning is possible with ACS380, ACS480, and ACS580 drives for selected applications.

### Troubleshoot and analyze with monitoring and diagnostics

Drive Composer 3 includes several features to help you monitor a drive's performance and quickly diagnose any issues. You can monitor a drive's status by selecting and sending parameters to the monitor. The fault data logger in the event list allows you to monitor a drive's signals and performance when a fault occurs.

### Easily backup and restore drive configurations

Creating drive configuration backup files to restore drives and configure spare control boards is simple. Files can be saved to physical media or cloud storage, or shared via email.

### Customize the UI according to your needs

View data in tabs or in individual floating windows that can be freely arranged.

# 03



## Reliable and secure

### 3.1 Reliable remote troubleshooting

With Drive Composer 3 you can access drives using a secure VPN, giving you a reliable connection to perform remote troubleshooting wherever in the world the drive is located.

### 3.2 Secure by design

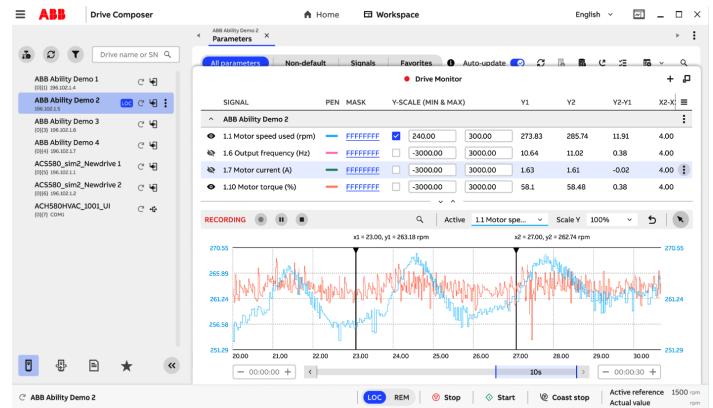
Drive Composer 3 follows the principles of IEC 62443-4-1, with secure drive connectivity for peace of mind. Regular updates ensure that your systems remain secure.

### Connectivity options

- PC
  - USB with selected drives and assistant control panel (ACP)
  - Ethernet with selected drives or compatible Ethernet fieldbus adapter modules

### Supported operating systems

- Windows 10 and 11



Drive Composer 3 is constantly being developed, with incremental improvements and regular feature updates. Drive Composer 3 Pro functionality will be available in the same application for users with a Drive Composer 3 Pro subscription.

Find out more and download the tool:

[new.abb.com/drives/software-tools/drive-composer](https://new.abb.com/drives/software-tools/drive-composer)



We reserve the right to make technical changes or modify the contents of this document without prior notice. With regard to purchase orders, the agreed particulars shall prevail. ABB does not accept any responsibility whatsoever for potential errors or possible lack of information in this document.

We reserve all rights in this document and in the subject matter and illustrations contained therein. Any reproduction, disclosure to third parties or utilization of its contents – in whole or in parts – is forbidden without prior written consent of ABB. Copyright© 2025 ABB All rights reserved